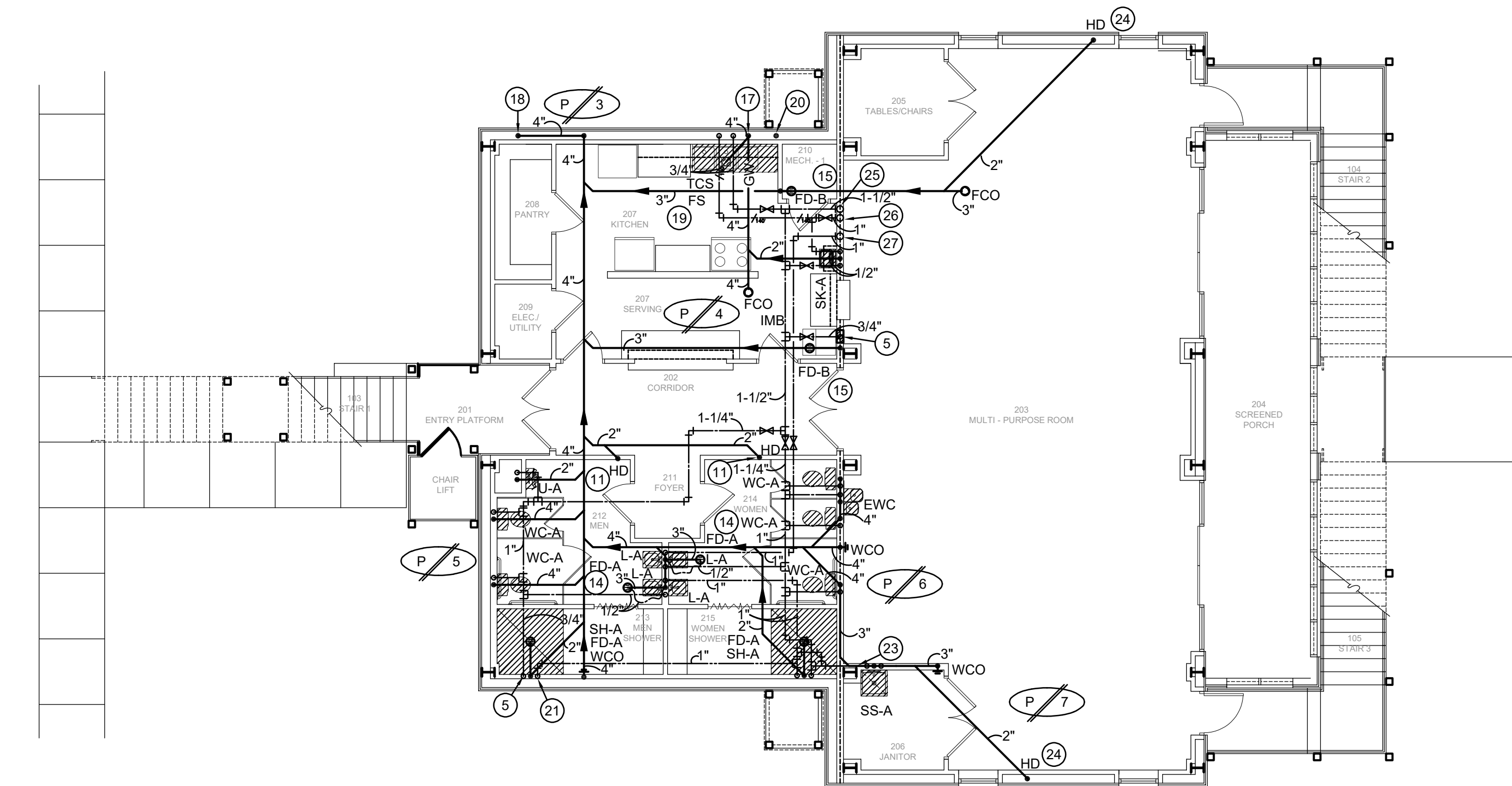


1 GROUND LEVEL - PLUMBING PLAN
SCALE = 1/8" = 1'-0" REFER TO ARCHITECTURAL PLANS FOR ALL DIMENSIONS.



2 SECOND LEVEL - PLUMBING PLAN
SCALE = 1/8" = 1'-0" REFER TO ARCHITECTURAL PLANS FOR ALL DIMENSIONS.

GENERAL PLUMBING NOTES:

- ALL WORK SHALL BE IN ACCORDANCE WITH APPLICABLE LOCAL, STATE, AND FEDERAL CODES (INCLUDING INTERNATIONAL BUILDING CODE, NFPA, ETC.) AND APPLICABLE DEQ AND DHHOP REGULATIONS TO THE SATISFACTION OF THE AUTHORITIES HAVING JURISDICTION. CONTRACTOR SHALL OBTAIN REQUIRED PERMITS AND APPROPRIATE WORK AUTHORIZATION PRIOR TO BEGINNING WORK.
- REFER TO ARCHITECTURAL DRAWINGS FOR ALL DIMENSIONS, DETAILS, ETC. INSTALL WORK TO CONFORM TO ARCHITECTURAL AND STRUCTURAL DRAWINGS AS REQUIRED. REVIEW COMPLETE SET OF CONTRACT DOCUMENTS PRIOR TO SUBMITTING BID.
- COORDINATE ALL WORK THROUGH GENERAL CONTRACTOR. COORDINATE CUTTING, PATCHING, TRENCHING WORK WITH SITE GRADING/PAVING PLAN.
- UNDERGROUND UTILITIES ARE APPROXIMATE. VERIFY INVERTS AND EXACT LOCATIONS WITH UTILITY PERSONNEL. VERIFY ALL EASEMENTS WITH APPROPRIATE PARTIES. ADJUST ALL UTILITY LINES ACCORDINGLY.
- COORDINATE INSTALLATION OF ALL PLUMBING, PIPING, ETC. WITH STRUCTURE AND ALL TRADES.
- FURNISH ALL LABOR, MATERIALS, VALVES, INSULATION, ETC. NECESSARY TO PROVIDE AND INSTALL THE COMPLETE PLUMBING PORTION OF THIS CONTRACT AS INDICATED ON PLANS. CONTRACTOR SHALL PAY ALL FEES FOR PERMITS AS NEEDED.
- ALL DOMESTIC WATER BRANCH LINES SHALL HAVE VALVES AT MAINLINES.

PLUMBING KEYNOTES

- PROVIDE A CUTOFF VALVE IN CAST IRON VALVE BOX WITH METAL COVER MARKED "WATER". REFER TO DETAIL.
- PROVIDE AND INSTALL A 2" WATTS SERIES LF909 (WITH ELBOW) REDUCED PRESSURE ZONE BACKFLOW PREVENTER (DOMESTIC WATER) ABOVE GRADE IN HEATED INSULATED BOX WITH 1,000 WATT HEATER (HOTBOX MODEL HB2) IN THIS VICINITY AS PER LOCAL CODES. BACKFLOW PREVENTER SHALL HAVE BRONZE STAINER, STAINLESS STEEL CHECK SEATS, BALL TYPE CUTOFF VALVES, SPRING LOADED "Y" PATTERN CHECK VALVES, RELIEF VALVE, TEST COCKS, AND SHALL CONFORM TO ALL CODES. COORDINATE EXACT LOCATION WITH ARCHITECTURAL SITE PLAN AND GENERAL CONTRACTOR PRIOR TO INSTALLATION.
- GREASE WASTE PIPING DROPS DOWN FROM ABOVE.
- SANITARY SEWER PIPING DROPS DOWN FROM ABOVE.
- 1" DOMESTIC COLD WATER PIPING DROPS DOWN WALL TO HOSE BIBB ON GROUND FLOOR WHERE SHOWN.
- DOMESTIC COLD WATER DROPS DOWN FROM ABOVE. PROVIDE SHUT-OFF VALVE IN VERTICAL PIPE IN ACCESSIBLE LOCATION.
- PIPE T&P RELIEF LINE AND EMERGENCY DRAIN PAN LINE FULL SIZE FROM WATER HEATER TO EXTERIOR. SEAL PENETRATIONS WEATHER TIGHT. TERMINATE RELIEF EMERGENCY DRAIN LINE TO EXTERIOR 6" A.F.G. WITH 90° ELBOW.
- RUN 2" DOMESTIC COLD WATER LINE UP FROM BELOW GRADE IN THIS VICINITY TO BACKFLOW PREVENTER. DOMESTIC WATER SHALL ENTER BUILDING AND RISE UP WHERE SHOWN.
- PROVIDE AND INSTALL WATER HEATER ON 3'-0" PLATFORM IN THIS VICINITY.
- INSTALL THERMOSTATIC MIXING VALVE ON WALL IN THIS VICINITY. ROUTE DOMESTIC COLD WATER LINE AND 140° DOMESTIC HOT WATER LINE FROM WATER HEATER TO INLET PORTS OF MIXING VALVE. ROUTE 120° DOMESTIC HOT WATER LINE FROM OUTLET PORT TO FIXTURES SHOWN.
- PROVIDE 2" INSULATED HUB DRAIN IN WALL FOR UNIT CONDENSATE DRAIN LINE. INSULATE DRAIN LINE DOWN TO BELOW SLAB WITH 2" THICK FIBERGLASS INSULATION WITH FOIL BACKING. TAPE ALL JOINTS. COORDINATE LOCATION WITH MECHANICAL CONTRACTOR PRIOR TO ANY ROUGH-INS.
- INSTALL 125 GALLON (TRAFFIC RATED) GREASE TRAP WITH CRYSTALLINE WATERPROOFING ADMIXTURE BELOW GRADE WHERE SHOWN. REFER TO DETAIL.
- PROVIDE HOT WATER CIRCULATING PUMP IN THIS VICINITY. INTERLOCK RECIRC PUMP WITH HOT WATER HEATER PER MANUFACTURERS INSTALLATION INSTRUCTIONS WITH TIMER AND AQUA-STAT. COORDINATE TIMER SETTING WITH OWNER.
- TAP OFF LAVATORY P-TRAP WITH 1/2" CHROME LINE TO WALL AND CONTINUE IN WALL WITH 1/2" SOFT COPPER LINE TO BELOW GRADE TO TRAP PRIMER CONNECTION FLOOR DRAIN. ALL EXPOSED SUPPLY LINES SHALL BE CHROME (J.R. SMITH 2698 OR EQUAL P-TRAP TYPE). (TYPICAL)
- PROVIDE PROSET TRAP GUARD IN FLOOR DRAIN.
- REFER TO SHEET P1.0 FOR SEPTIC TANK LOCATION.
- GREASE WASTE DROPS DOWN IN WALL WHERE SHOWN. REFER TO VIEW 1 ON THIS SHEET FOR CONTINUATION.
- SLOPE SANITARY SEWER DOWNWARD AND DROP DOWN IN WALL WHERE SHOWN. REFER TO VIEW 1 ON THIS SHEET FOR CONTINUATION.
- INSTALL 2" AIR GAP BETWEEN TRIPLE COMPARTMENT SINK (TCS) AND FLOOR SINK (FS).
- 2" VENT RISES UP TO ROOF WHERE SHOWN.
- 1" DOMESTIC HOT WATER LINE DOWN TO FIRST FLOOR WHERE SHOWN.
- 1" DOMESTIC HOT WATER LINE DROPS DOWN FROM ABOVE.
- ROUTE 3/4" DOMESTIC HOT WATER AND COLD WATER LINE IN WALL TO SERVICE SINK WHERE SHOWN.
- INSTALL HUB DRAIN LOW IN WALL WHERE SHOWN FOR PAC CONDENSATE.
- 1-1/2" DOMESTIC COLD WATER LINES RISES UP FROM BELOW WHERE SHOWN.
- 1" 140°F DOMESTIC HOT WATER LINES RISES UP FROM BELOW WHERE SHOWN.
- 1" 120°F DOMESTIC HOT WATER LINES RISES UP FROM BELOW WHERE SHOWN.
- 1-1/2" DOMESTIC COLD WATER LINES RISES UP WHERE SHOWN TO SERVE 2ND FLOOR.
- 1" 140°F DOMESTIC HOT WATER LINES RISES UP WHERE SHOWN TO SERVE 2ND FLOOR.
- 1" 120°F DOMESTIC HOT WATER LINES RISES UP WHERE SHOWN TO SERVE 2ND FLOOR.



Project No.	0225
Drawn By:	EM
Approved By:	CC
Preliminary Date:	MARCH 31, 2026
Release Date:	
File:	

WAYNE LAWRENCE COCO, AIA, ARCHITECT, L.L.C.
P.O. BOX 111 - 510 MAIN ST.
SIMMESPORT, LOUISIANA 71369
318.359.3732 / FAX 318.941.2821
Coco & Company
a professional architectural company

FUTURE FARMERS OF AMERICA
CONFERENCE CENTER
MANSURA, LOUISIANA AT OLD RIVER



ASSOCIATED DESIGN GROUP,
301 Jackson Street, Suite 204
Alexandria, Louisiana 71301
Phone: (318) 445-8870
Email: adginc@adginc.org

Project No. 26019

Sheet Number:

P1.1

34 of 40